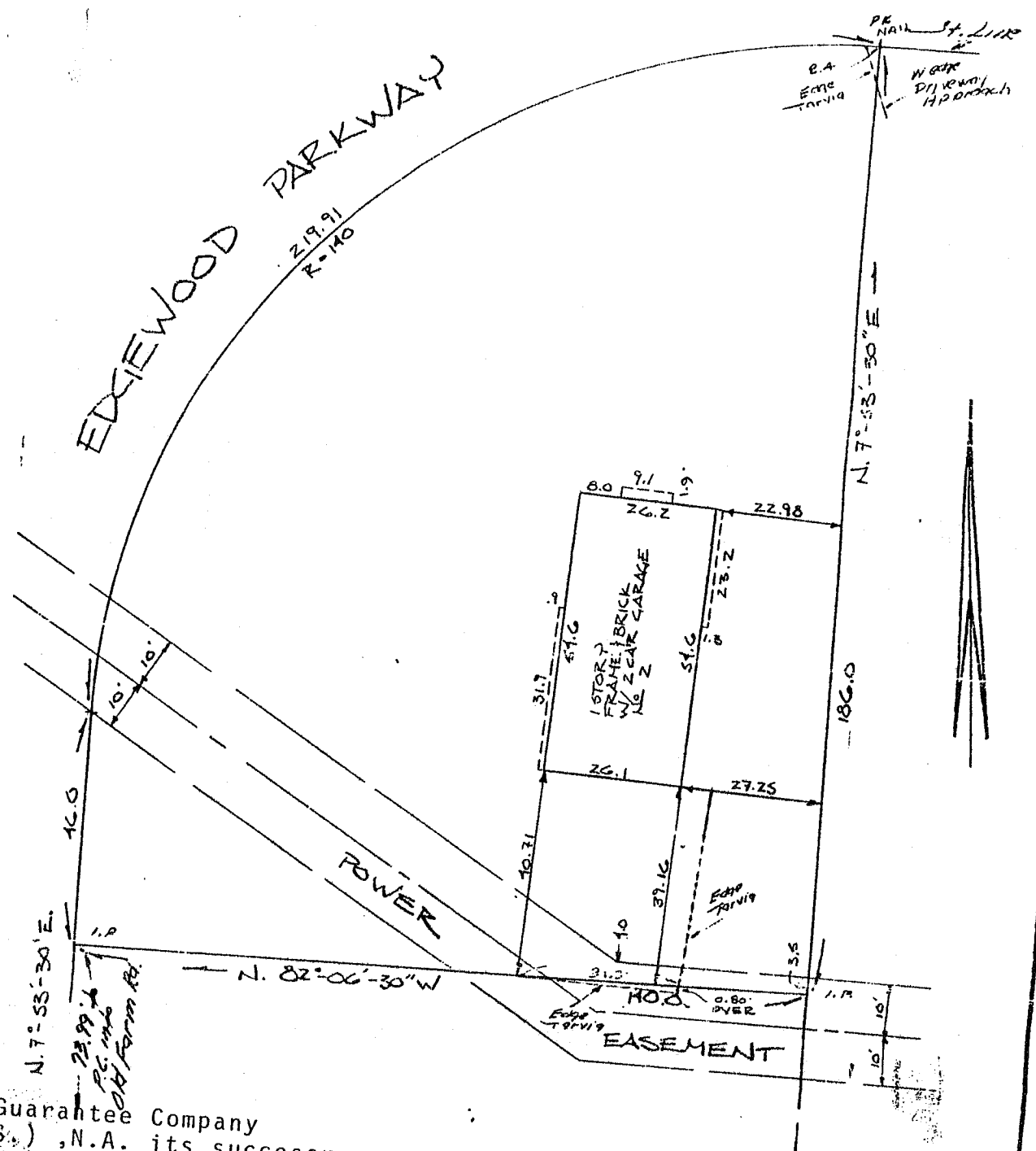


EDGEWOOD PARKWAY



To: The Title Guarantee Company
 Citibank, (N.Y.S.), N.A. its successors and assigns
 Langan, Grossman, Kinney & Dwyer

I HEREBY CERTIFY THAT THIS MAP WAS MADE FROM AN ACTUAL SURVEY AND SAME IS CORRECT.

R. J. Lighton
 LICENSED LAND SURVEYOR
R. J. LIGHTON
 SYRACUSE, N.Y. NYSLS 45373

Location Survey on LOT #19 of the
 * Foxwood Farms Tract *
 Known as No. 2 Edgewood Parkway, Town
 of Manlius, County of Onondaga, N. Y.
 DRAWN BY: G.A.M. SCALE: 1"=30'
 REVISIONS: May 25, 1983 DATE: Oct. 29, 1980
 6/15/1984